

EmpInno

**Enhancing RIS3 capacity and delivery via
specialists**

Feedback paper mechanism

Marko Lehtimäki/Prizztech

May 2018

About the region

- Strong industrial culture
- Metal processing is local specialty (Cu, Co, Ni, Au, Ag, REE-processing)
- First-in-Finland: LNG import terminal in Pori
- First-in-the-world: Offshore wind farm in icy conditions
- **ENERGY**
- **MARITIME**
- **INDUSTRIAL RENEWAL:**
 - Circular Economy
 - Robotics, Automation, AI → **ROBOCOAST**
 - Innovation Challenges
- Industrial jobs 20% (Finland in 13%)
- Industry 27 % of GDP in region (20 % in Finland)

Satakunta Region Western Finland





Digital Innovation Hubs

Search

Countries

Evolutionary Stages

Technical Competences

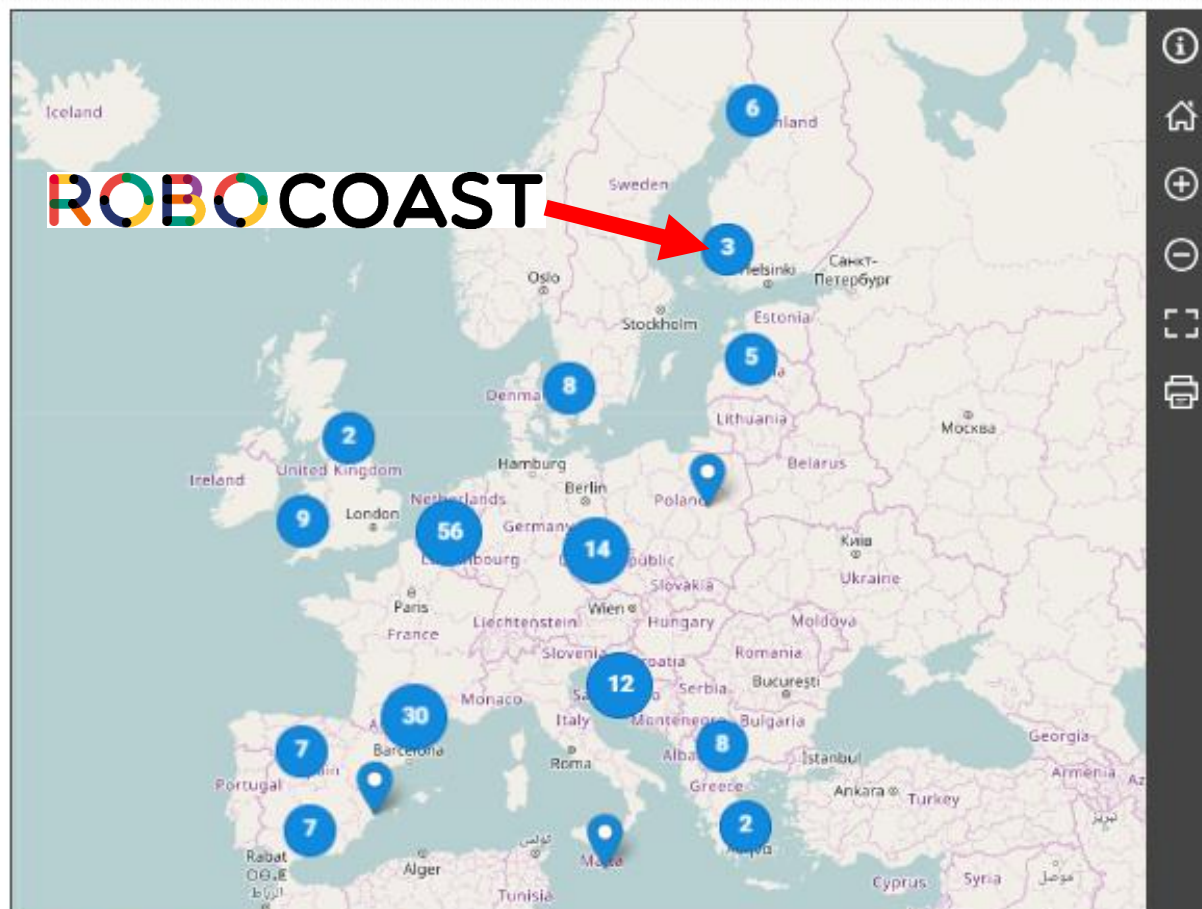
Services Provided

Focus on TRL

Market sectors

SEARCH

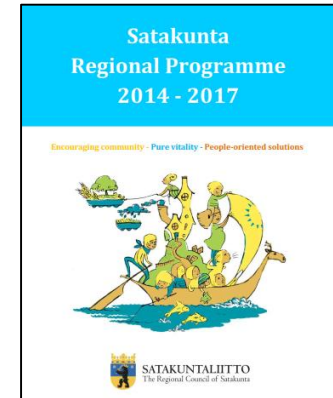
Contact us in the following email: JRC-B3-DIH@ec.europa.eu



Click on the following link if you want to propose new HUB.

Feedback paper mechanism

- Prizztech's management group is responsible of feedback paper mechanism → knowledge management.
- Once a month we discuss it companywide.
- We are providing RIS3 owner (Regional Council) information:
 - ✓ Companies' needs towards development activities (lack of skilled workforce, renewal of national support system for renewable energies etc.)
 - ✓ Market & technology opportunities (Norwegian price level made Finnish work competitive and we implemented Arctic Growth Program etc.)
- Information is collected in f2f-meetings, project meetings, seminars, workshops, training sessions, innovation challenges, match-making events, etc.
- RIS3 owner and implementors meet at industry specific forums which are provided by RIS3 owner, creating shared vision.
- RIS3 implementors get feedback in informal discussions but also when negotiating project funding.
- Regional strategies are documented:
 - ✓ Regional RIS3 strategy
 - ✓ Satakunta Regional Programme + Regional Growth Programme
 - ✓ Prizztech's strategy (as an example of one implementor)



How do we collect information?



Regional Innovation System

1. Networking:

Cooperation and contacts to industrial partners, mapping the needs & possibilities and defining shared vision.



2. Refining:

Identified and shared objectives are refined in triple-helix –manner with all stakeholder groups.



3. Selection:

Most promising ideas are formed as development projects and programs.



4. Results:

- Development projects
- Industrial renewal
- Pilot solutions
- Reference cases
- Increased RDI-activities
- Investments
- Common strategy for regional development

"We bring together key players across the whole innovation chain, from research, from product & process development to prototyping and demonstration, and to full scale implementation in the public and private sectors."

Evaluation of feedback paper mechanism

- We are overall happy (company level) with our model, but you can always do better... some information is always missing.
- Regionally we have also very good cooperation between strategy owner and implementors.
- We tackle national and EU-level questions together, and inform each other about new ideas and openings.
 - ✓ Mapping the topical issues for EU-level activities
 - ✓ Promoting regional industry and clusters for national funding
- Open discussion and informal relationships are strengths, need for new ideas and actors is the other side of the coin.
- We lack national innovation policy (and programs), which means that there is very little coordination. Sometimes same thing is done many times, sometimes opportunities fade away.

Marko Lehtimäki

Prizztech Ltd.

Development Director, D.Sc.

Tel: + 358 44 710 5346

e-mail: marko.lehtimaki@prizz.fi

www.prizz.fi



EUROPEAN UNION

EUROPEAN
REGIONAL
DEVELOPMENT
FUND

EmplInno